



Be happy. Be authentic. Be Vivo.

# #102 Accessible Unit 1A

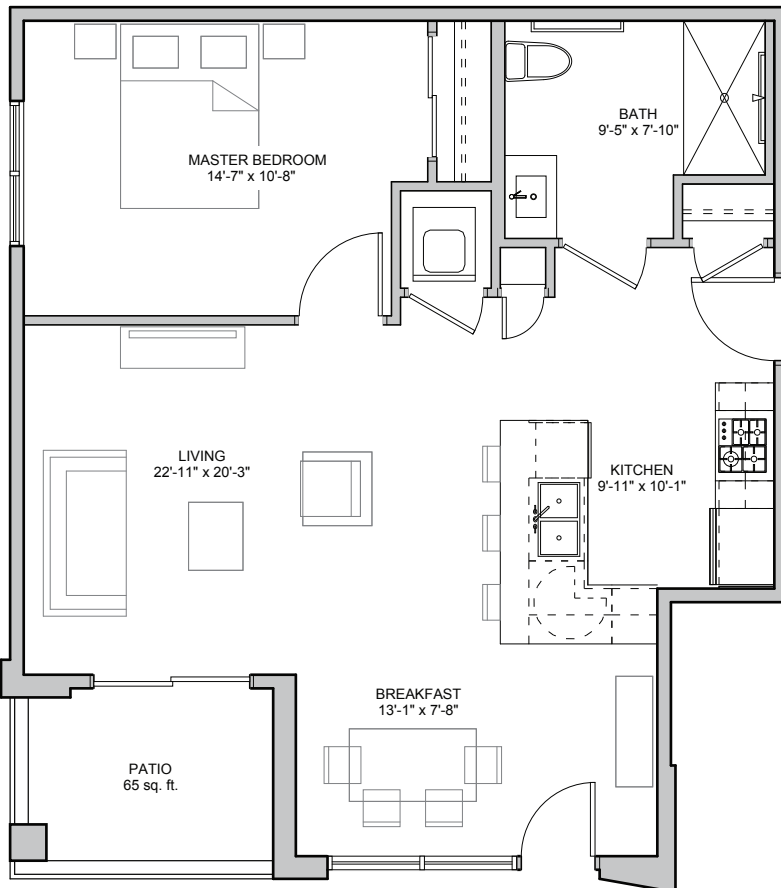
±822 SQ.FT. INDOOR/OUTDOOR LIVING SPACE

In addition to the Standard VIVO Feature Package, This unit also features:

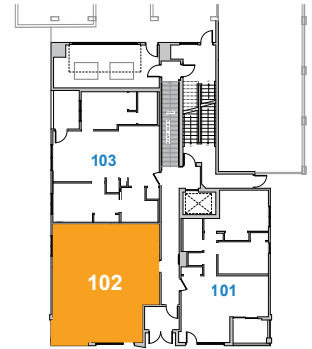
- ±757 sq.ft. of indoor space + 65 sq.ft. of outdoor living space
- Accessible barrier-free layout and features
- At-grade south-facing patio
- Private exterior building entrance
- 1 bedroom, 1 bathroom plan
- 9' ceilings throughout
- Spacious 16'6" wide master bedroom
- Over-sized 8' semi-private side yard
- Full-height living room window wall

## The Standard VIVO Feature Package includes:

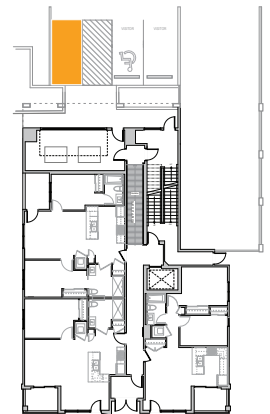
- Stainless steel kitchen appliance package plus natural gas BBQ
- In-suite laundry appliance package
- In-floor heating system
- Individual energy and water metering
- 4" baseboard and 3" casing
- Smooth finish ceilings throughout
- Natural stone or quartz counters throughout
- Full palette interior coordination
- Large outdoor living space with glass railing
- Full depth eating bar with pendant lighting
- Over-sized high-efficiency windows and patio doors
- Engineered hardwood throughout flooring with designer carpet in bedrooms
- 12x24" tile flooring with tile floor trim in bathrooms
- Full-height tile backsplash and tub/shower surrounds
- Natural gas BBQ connection
- Complete hot water on demand system
- Air conditioning rough-in
- Individual water shut-offs in all fixture locations
- Energy-efficient LED lighting package
- Heated, titled, indoor parking
- Electric car-ready charging port at each parking stall
- Auto, bike, and pet wash station in the parkade



Main Floor



Parking



condo price:  
~~#\$371,500~~  
5% pre-sale savings:  
**#\$352,925**  
plus parking & GST

pre-sale price: **#\$352,925**  
assigned parking: **#\$15,000**  
**#\$367,925 plus GST**